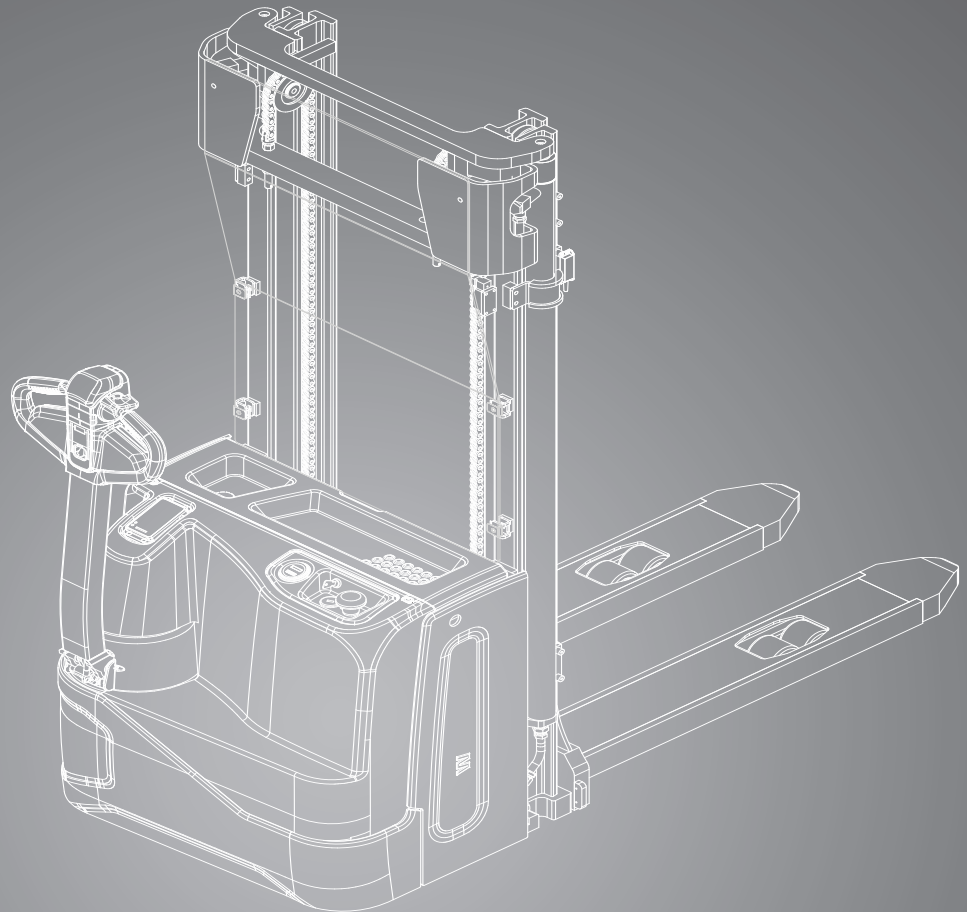


SWX16i

Electric Stacker Truck with initial lifting
1600 kg



DIMENSIONS

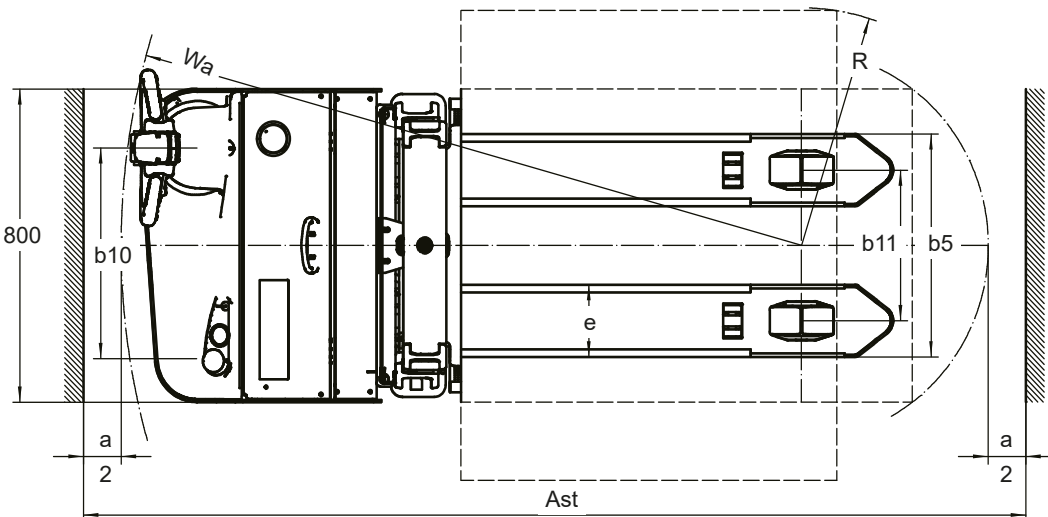
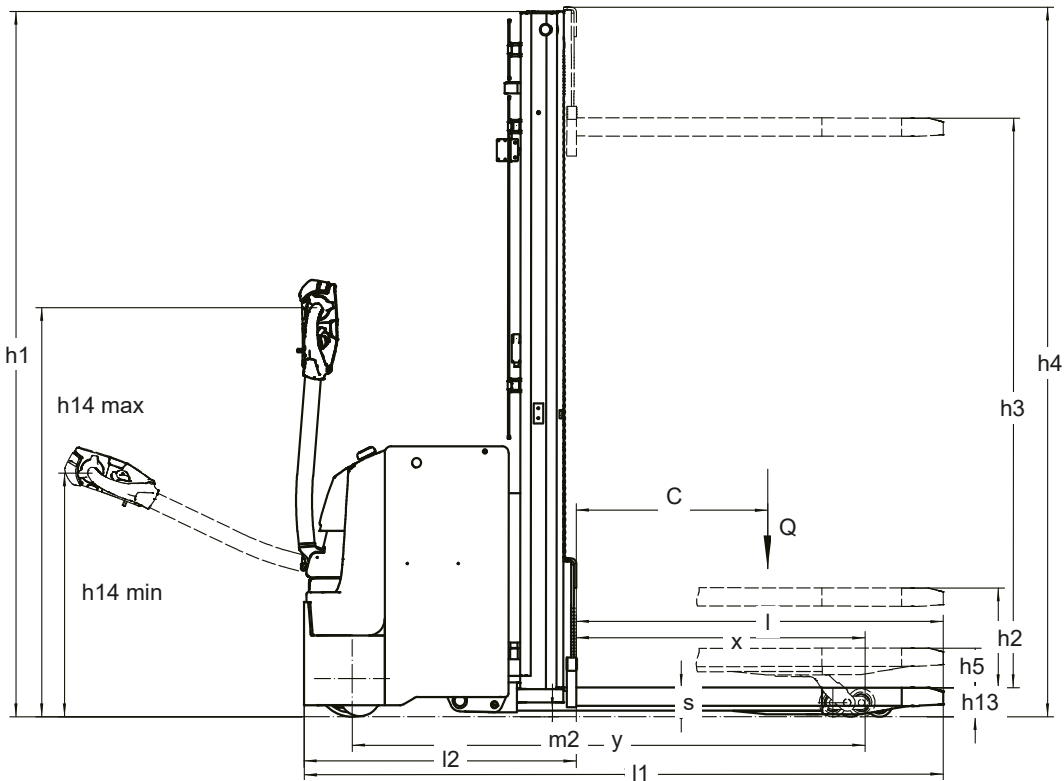
SWX16i

$$R = \sqrt{(l_6 - x)^2 + \left(\frac{b_{12}}{2}\right)^2}$$

$$R_h = \sqrt{x^2 + \left(\frac{b_{12}}{2}\right)^2}$$

$$A_{st} = W_a + R + \alpha \text{ if } R_h < W_a$$

$$A_{st} = R_h + R + \alpha \text{ if } R_h > W_a$$



For corresponding data see specification chart.

SPECIFICATIONS acc. to VDI 2198

1.1 Manufacturer (Abbreviation)		CLARK	
Specifications	1.2 Manufacturer's designation	SWX16i	
	1.3 Drive	24 V, Electric	
	1.4 Operator type	Pedestrian	
	1.5 Rated capacity / rated load (mast only)	Q (kg)	1600
	1.5.2 Rated capacity / rated load (support arms only)	Q2 (kg)	1600
	1.6 Load centre distance	c (mm)	600
	1.8 Load centre	x (mm)	906
	1.9 Wheelbase	y (mm)	1608
	Weight	2.1 Service weight (incl. lead-acid battery)	kg
2.2 Axle loading laden front/rear (Li-Ion)		kg	1090/2030
2.3 Axle loading unladen front/rear (Li-Ion)		kg	780/340
Tyres, Chassis	3.1 Tyres		Polyurethane
	3.2 Tyre size, front		Ø 230 x 75
	3.3 Tyre size, rear		Ø 85 x 70
	3.4 Additional wheels (dimensions)		Ø 130 x 55
	3.5 Wheels, number front/rear (x = driven wheels)		1 x + 1 / 4
	3.6 Tread, front	b10 (mm)	538
	3.7 Tread, rear	b11 (mm)	385
Dimensions	4.2 Height upright lowered	h1 (mm)	2015
	4.4 Lift	h3 (mm)	2915
	4.4 Lift height	h3 + h13 (mm)	3000
	4.5 Height upright extended	h4 (mm)	3495
	4.6 Initial lift	h5 (mm)	120
	4.9 Height tiller in driving position min. / max.	h14 (mm)	715 / 1200
	4.15 Height lowered	h13 (mm)	90
	4.19 Overall length	l1 (mm)	2028
	4.20 Length to face of forks	l2 (mm)	878
	4.21 Overall width	b1 (mm)	810
	4.22 Fork dimensions	s • e • l (mm)	60 x 185 x 1150
	4.25 Distance between fork arms	b5 (mm)	570
	4.32 Ground clearance, centre of wheelbase	m2 (mm)	14
	4.33 Aisle width for pallets 1000 x 1200 sideways	Ast (mm)	2646
	4.34 Aisle width for pallets 800 x 1200 lengthways	Ast (mm)	2560
4.35 Turning radius	Wa (mm)	1826	
Performance	5.1 Travel speed laden / unladen	km / h	5 / 5,5
	5.2 Lift speed laden / unladen	m / s	0,23 / 0,3
	5.3 Lowering speed laden / unladen	m / s	0,4 / 0,36
	5.8 Max. gradeability laden / unladen * 1	%	8,0 / 16,0
	5.10 Service brake		Electric
Electrics	6.1 Drive motor rating S2 60 min	kW	1,6
	6.2 Lift motor rating at S3 15 %	kW	4,5
	6.3 Battery acc. to DIN 43531/35/36 A, B, C, no		No
	6.4 Battery voltage/nominal capacity (Li-Ion)	V / Ah	24 V / 205Ah
	6.5 Battery weight (Li-Ion)	kg	142
	6.6 Energy consumption acc. to VDI - cycle	kWh / h	-
	- Battery type		Li-Ion
	8.1 Type of drive unit		AC
10.5 Steering design		Mechanic	
Misc.	10.7 Sound pressure level at drivers' seat acc. EN 12053	dB(A)	74

* 1) At friction coefficient $\mu = 0.6$ with 1.6 km / h

All data refer to truck in standard design. All dimensions are subject to the usual tolerances. CLARK products and specifications are subject to change without notice. Illustrations and technical specifications are not binding for the execution.

PRODUCT DESCRIPTION

The CLARK SWX16i electric stacker truck is ideal for transporting and storing goods over short distances. With a maximum lifting height of 5500 mm, even higher shelves can be reached without any problems. Thanks to its compact dimensions, safe handling is possible even in narrow aisles. In addition, the standard proportional hydraulic control enables precise storage and retrieval of sensitive loads.

Available with lithium-ion battery (Li-Ion)

The SWX16i is available with a 205 Ah lithium-ion battery. For this battery a 24 V, 30 Ah charger for Li-Ion batteries is used. Recharging the Li-Ion battery is possible at any 230 V socket. No high-voltage connection is required.

The advantages of Li-Ion technology are:

1. high availability due to short charging times
2. no battery change required
3. cost savings due to longer life cycle and freedom from maintenance compared to lead-acid batteries
4. no separate battery charging room and ventilation required, as no gases are produced

Version with initial lifting

The SWX16i is equipped with an initial lift, which gives more ground clearance and thus ensures levelling of the floor conditions. This is particularly advantageous when moving goods over flat ramps or ground edges, as it prevents them from touching down.

Another benefit of the initial lifting is that, in addition to the forks, the support arms can also pick up a pallet for transport. This increases the productivity and efficiency of the SWX16i in equal measure.

User-friendly and safe in use

All controls and functions for lifting, lowering and driving are positioned within easy reach in the ergonomic tiller, which can be operated by both right-handed and left-handed operators.

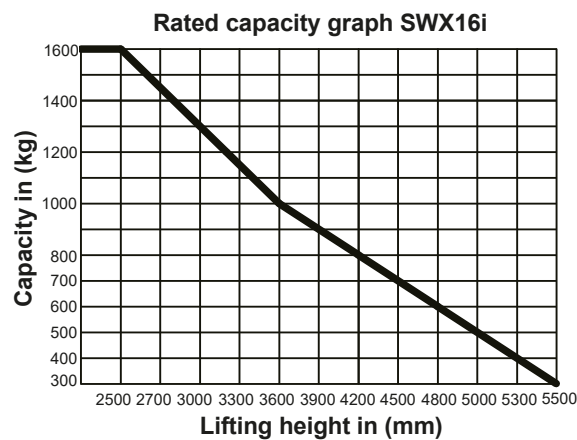
The vehicle brakes automatically as soon as the driver releases the tiller. The tiller is long and low-set. This not only gives the operator sufficient safety distance from the vehicle, but also an optimal view of the forks.

FEATURES AND BENEFITS

SWX16i

Upright table SWX16i

Mast type	Lift height (h3+h13)	Mast height lowered (h1)	Mast height extended (h4)	Free lift (h2)
	mm	mm	mm	mm
Standard	2600	1815	3095	90
	3000	2015	3495	90
	3300	2185	3835	90
	3600	2312	4089	90
	3900	2462	4389	90
	4150	2592	4649	90
Triplex	4000	1820	4445	1345
	4500	2020	4945	1545
	4800	2115	5245	1645
	5000	2185	5445	1715
	5500	2385	5945	1915



Performance & Safety

- Powerful AC drive motor
- Push button for driving with the tiller in the upright position
- Compact design for safe handling in tight work areas
- Initial lifting for more freelif and ground clearance
- Proportional lift system for maximum precision when lifting and lowering
- Driving speed reduction when load is lifted

Reliability & serviceability

- Error code indication in display
- Proven AC controllers
- Easy access for service and maintenance thanks to one-piece bonnet
- Programming of travel and lift parameters is simple and straightforward

Comfort & ergonomics

- The controls are positioned within easy reach
- A storage compartment on the battery cover
- Discharge indicator in a convenient position for viewing

FEATURES & EQUIPMENT EXTRAS



		SWX16i
General	Low-maintenance AC traction motor	•
	Proportional hydraulic system	•
	Protected lifting cylinders	•
	Stable 4-point support	•
	Easy to open engine cover for easy servicing	•
	Storage compartment on battery cover	•
Drive and batteries	Available with lithium-ion battery (205 Ah)	•
	Tandem load roller (polyurethane)	•
	Battery discharge indicator	•
Safety	Activation via key switch	•
	Finger protection through plexiglass on lift mast	•
	Push button for driving with tiller in upright position	•
	Automatic stop on slopes (automatic parking brake)	•
	Ergonomic safety tiller	•

• = Standard equipment x = Option - = Not available

<p>CLARK Europe GmbH Dr.- Alfred-Herrhausen-Allee 33 D - 47228 Duisburg / Germany Tel. +49 (0)2065 499 13-0 Fax +49 (0)2065 499 13-290 E-mail: info-europe@clarkmheu.com www.clarkmheu.com</p>	<p>Dealer</p>
--	---------------